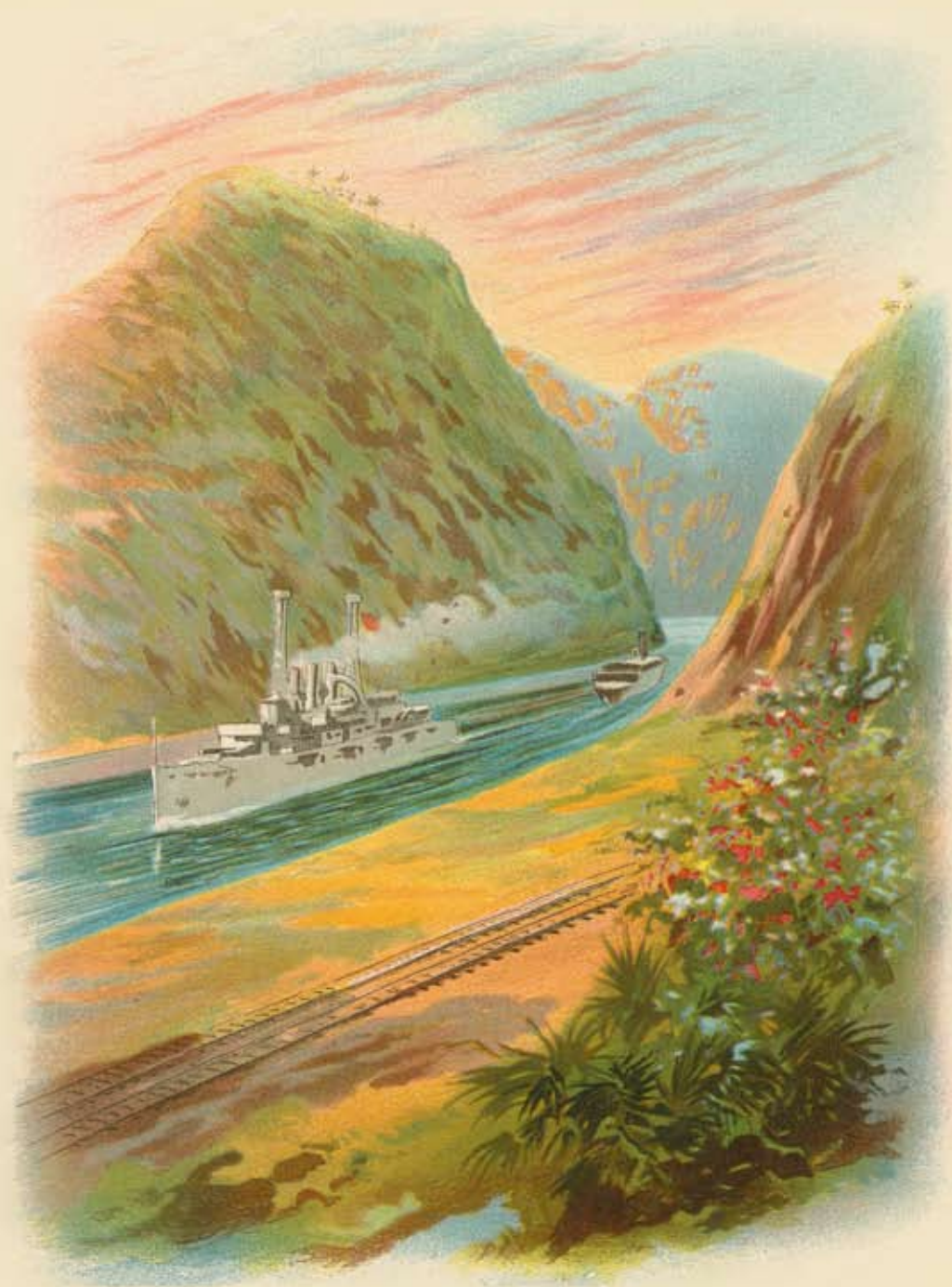


# THE ATHENÆUM OF PHILADELPHIA



192<sup>ND</sup> AND 193<sup>RD</sup> ANNUAL REPORTS



# THE ATHENÆUM OF PHILADELPHIA

## 192<sup>ND</sup> AND 193<sup>RD</sup> ANNUAL REPORTS

### FISCAL YEARS 2007-2008



© 2009 The Athenæum of Philadelphia

Published by The Athenæum of Philadelphia  
219 S. 6th St., Philadelphia, PA 19106-3794  
P: 215-925-2688, F: 215-925-3755  
[www.PhilaAthenaeum.org](http://www.PhilaAthenaeum.org)

**Front Cover:** Cover design for “Span Pencil Tablet” by Robert M. Camden. Robert M. Camden Collection.

**Rear Cover:** Exhibition posters from fiscal years 2007-2008.

# THE ATHENÆUM OF PHILADELPHIA

## 2006-2008

### BOARD OF DIRECTORS

Lea C. (Mrs. Henry) Sherk, President

Hugh A.A. Sargent, Esq., Vice-President

William M. Davison, 4th, Treasurer

Sandra L. Tatman, Ph.D., Secretary

John A. Baird, Jr. (resigned 2008)

Joanne R. Denworth, Esq.

Robert J. Gill, M.D.

Francis R. Grebe

John Otto Haas

Thomas B. Hagen (resigned 2008)

Robert E. Linck

John D. Milner, FAIA

Hyman Myers, FAIA

Satoko I. (Mrs. Edward J.) Parker, Ph.D.

Charles C. Savage

Charles D. Snelling

John C. Tuten, Jr., Esq.

Christina T. Webber

### Directors Emeritus

Nicholas Biddle, Jr.

James F. O’Gorman

George B. Tatum, Ph.D.

### STAFF

Dr. Sandra L. Tatman, Executive Director

Eileen M. Magee, Assistant Director for Programs

Laura A. Fiorello, Membership Coordinator

Jill LeMin Lee, Circulation Librarian

Bruce Laverty, Curator of Architecture

Michael Seneca, Director, Regional Digital Imaging Center

Jim Carroll, Imaging Specialist, Regional Digital Imaging Center

Denise Fox, Conservation Specialist

Susan Gallo, Receptionist

Louis Vassallo, Building Supervisor

### Emeritus

Roger W. Moss, Executive Director Emeritus

# FROM THE PRESIDENT OF THE BOARD

**Lea Carson Sherk**

Since the last Annual Report, there have been many important changes at the Athenæum of Philadelphia. Most notable among those changes was the retirement, after 40 years of leadership, of our Executive Director, Roger W. Moss. As Secretary and Librarian, Roger's tenure was the longest in the Athenæum's history and was characterized by strong and enlightened leadership. As a scholar and historian, Roger became an icon in the cultural life of Philadelphia while preserving our historic building and steering a sound financial and programmatic course.

Upon the announcement of Roger's retirement, the Board of Directors formed a Search Committee to interview candidates with sufficient experience and academic credentials to be considered for the post of Executive Director. Advertisements were placed in scholarly journals and online, ultimately yielding more than 40 applicants. Based on deliberations and due diligence by members of the Search Committee, the choice was narrowed to a much shorter list of well-qualified applicants, and these candidates were invited to the Athenæum for an in-depth interview by the Committee and meetings with the Athenæum staff.

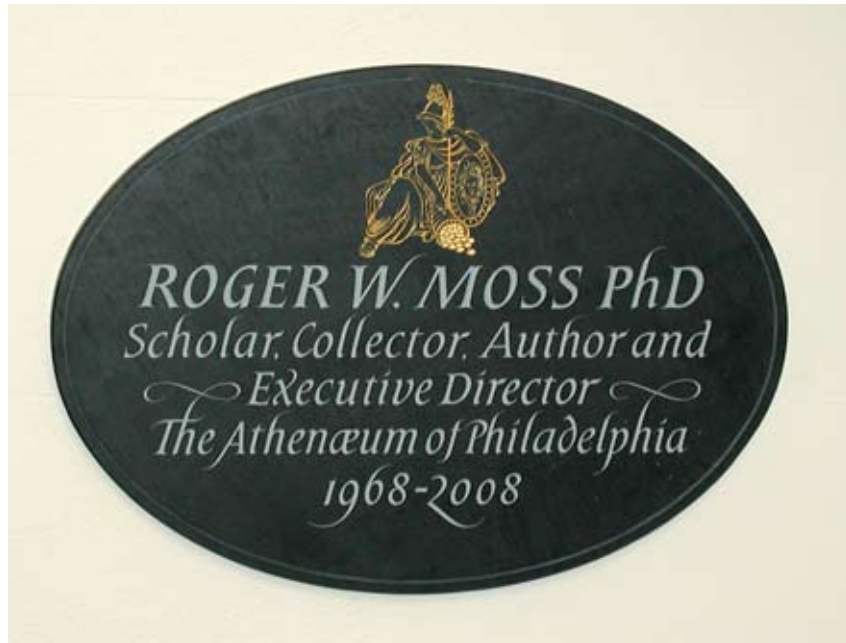
An individual with the necessary ability, drive and vision was quickly identified from the list of candidates. Dr. Sandra L. Tatman had all the necessary credentials, coupled with a history of dedicated service to the Athenæum. Unanimously endorsed by the Search Committee, Sandra received the approval of the full Athenæum Board and began her tenure on October 1, 2007.

Sandra has two master's degrees, one in Art History and one in Library Science, and she earned a Ph.D. in Art History from the University of Delaware.

From 1978 to 1986 she was the Architectural Librarian and Curator of Architecture at the Athenæum and was the Principal Investigator for the Philadelphia Architects and Buildings Project, funded by the William Penn Foundation from 2000 to 2004. She held several academic positions, most recently as Associate Professor and Faculty Assistant to the Chair in the Art Department at Towson University in Maryland, and previous posts at Goucher College, Widener University, and the University of Delaware.

Although familiar with the Athenæum, Sandra had a three-month overlap with Roger Moss last fall, a busy time indeed as we welcomed our new Director and prepared to honor the legacy of the Moss years. A gala party was planned with every detail attended to by the Gala Dinner Committee, ably chaired by Dr. Satoko I. Parker. Festive tables were set in the Busch Room and Members' Reading Room, and guests enjoyed a sumptuous meal followed by remarks by several of Roger's colleagues and friends, a toast and reminiscences by Roger himself. A plaque honoring Roger's many years at the Athenæum and outstanding scholarly career has been hand cut in England and placed in the stair hall adjacent to the donors plaque. It is a fitting tribute to a man who guided our institution for 40 years.

It has indeed been a year of change and progress for your Athenæum. We will celebrate our 200th anniversary in 2014. With the future in mind, the Board of Directors has crafted a mission statement and strategic plan. Under Sandra's guidance the bylaws have been revised to give our institutions the tools it needs to meet the challenges of the future. Most important to our success for our next century is the continuing support of our shareholders.



The plaque honoring Roger W. Moss, carved by Cardozo Kindersley.



Roger W. Moss Retirement Dinner: Hugh Sargent, Lea Carson Sherk, Satoko I. Parker, Roger W. Moss, Thomas Carroll, John Milner, William Seale. Photograph by Janetta McVey, 2007.

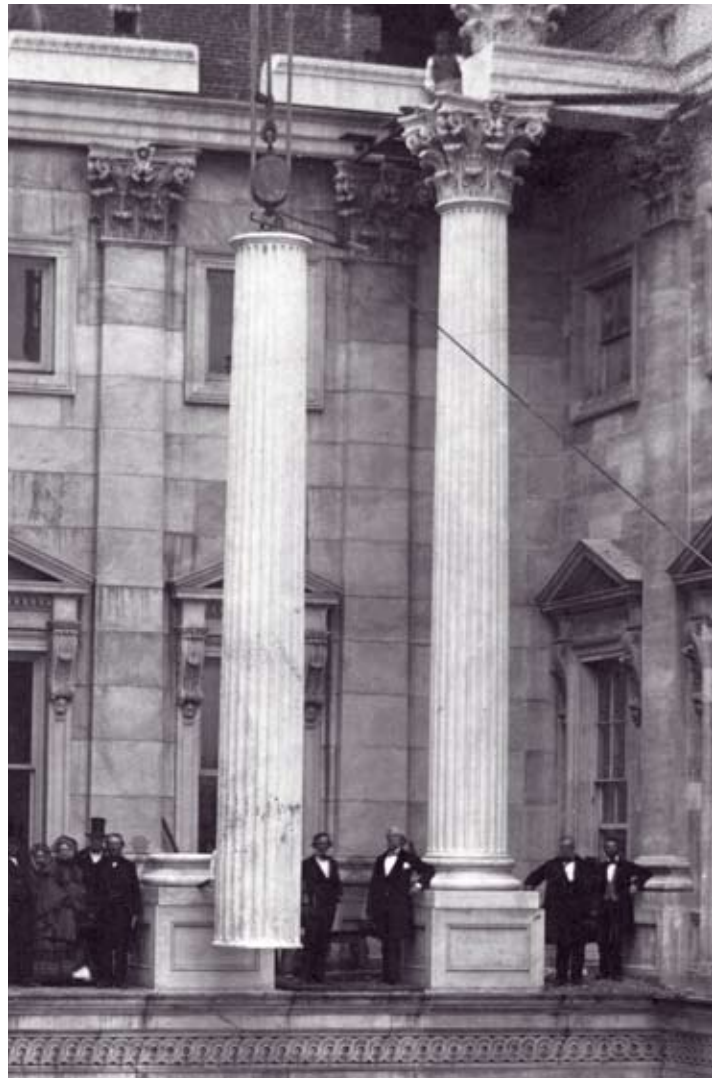
# REPORT OF THE EXECUTIVE DIRECTOR

**Dr. Sandra L. Tatman**

When I came to the Athenæum in October 2007 to succeed Roger Moss, I was first swept up in the several events which marked his retirement: a dinner in December, the portrait by photographer Michael Ahearn, the plaque carved in England by Cardozo Kindersley of Cambridge. All of that, along with Roger's careful instruction on budgets, book funds, and board relations, made my transition into the position of Executive Director a pleasure. During the past year I have had an opportunity to meet many of you and to correspond with others, and I find that Roger's esteem for the Athenæum members was based upon a real sense of the support and interest which Athenæum members find in the organization and its programs.

Working from the base of modern technology established during Roger's time here, in January 2008 we launched an e-newsletter which brings the latest news to the membership and to others in the community who have asked to receive it. In this way our news travels in a timely fashion so that programs such as exhibitions, lectures, workshops and other events can easily be added to electronic and paper calendars for the year. Beginning in January 2008 and with the aid of the Business Volunteers for the Arts, we also launched the process which culminated mid-year in an Athenæum Strategic Plan, a project which elicited responses from many members and also from community leaders who have interacted with the Athenæum. (See the Mission and Plan attached to this essay.) Both Board and staff worked on the final product, and we all agree that it was a worthwhile effort which gleaned vital information from our members so that we can plot a strategy for the future.

Our Dorothy W. and F. Otto Haas Gallery has proven to be a destination for both members and tourists. 2007 began with *Thomas U. Walter and the Design of the United States Capitol*, drawing upon our collection of some 250 images of the capitol conserved in the T. U. Walter Collection.



Jefferson Davis and Thomas Ustick Walter at the placement of a column, 1860. Thomas U. Walter Collection.



North Elevation of the Hotel Traymore, Atlantic City, New Jersey. William L. Price, 1914. Price & McLanahan Collection.

By spring the exhibition had changed to *On the Boards: Philadelphia Architects at the Jersey Shore*, and this provided the basis for Dr. George Thomas's address to us at the Annual Meeting.

In fall 2007 *Lost London: Selected Images from the Society for Photographing Old London Relics (1875-1886)* presented rarely seen photographs of London buildings which have disappeared.

This was followed in January 2008 by *Palazzos of Power: The Generating Stations of the Philadelphia Electric Company, 1900-1930. Photographs by Joseph E. B. Elliott*, and we offered a free lecture by Aaron Wunsch on this topic which brought in students from as far away as Muhlenberg College.



Above: Oxford Arms: A general view of the inn from the windows of the Old Bailey looking towards St. Paul's. Society for Photographing Old London Relics Collection.



Left: Turbine Hall, Chester Station. Joseph E. B. Elliott, Photographer.



At the Annual Meeting in April 2008 we opened *Architectural Shades & Shadows: The Continuing Tradition of the Beaux-Arts*, featuring the work of John Blatteau and John Harbeson.

In his presentation for the 2008 Annual Meeting John Blatteau emphasized the continuity of classical design from John Harbeson's work in the early to mid-twentieth century to contemporary efforts to continue in the classical vein.



**The Casino of a Country Club. By John Harbeson for the John Stewardson Memorial Competition in Architecture, 1910. John Harbeson Collection.**



**Benjamin Franklin Dining Room, United States Department of State. John Blatteau Associates, 1984.**

June 2008 saw the opening of *Art Bound: Book Design Past & Present* which combined the Athenæum legacy and donated collections of designed book covers and illustrations with the work of contemporary artists. Contemporary work included that of Athenæum member and retired Philadelphia architect John Fatula, whose flexagon Temple Book presented a history of architecture in the format of a Greek temple. Other contemporary book artists represented were Elysa Voshell, Cynthia Back, Maria Pisano, and Maddy Rosenberg, all members of the Philadelphia Center for the Book.

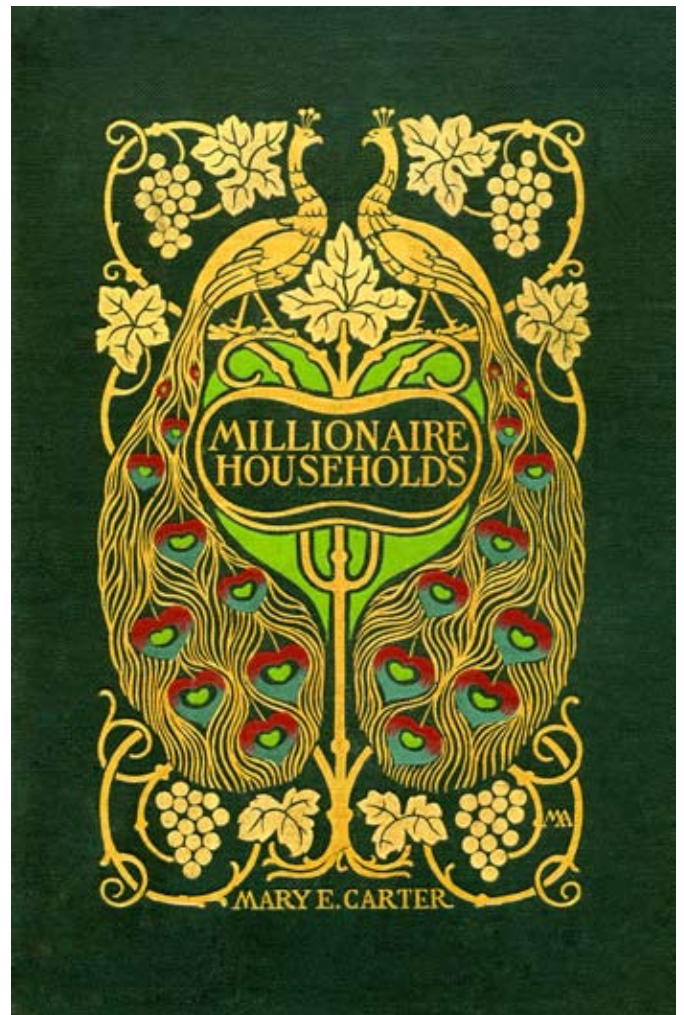
*Art Bound* demonstrated to us that there are often forgotten treasures that were added long ago to our lending collections. Today these items reside in the rare books collections, but they were originally acquired as reading material for the members. Visitors chuckled over title pages and some illustrations firmly stamped with Athenæum date receipts from the early twentieth century. *Art Bound*, which was reviewed in the *Philadelphia Inquirer* and *ArtMatters*, also increased foot traffic into the gallery, attracting visitors from our membership, from the Center for the Book, from the University of the Arts (which has a strong program in book arts), and from the general public, including tourists to the city. In fact, gallery traffic increased over 100 percent during this exhibition. Accompanying the exhibition was a series of book arts workshops led by artist Maria Pisano. This exhibition was a collaborative effort of the Athenæum and the Center for the Book, and both exhibition and workshops were underwritten by a grant from the Samuel S. Fels Fund. The exhibition was so popular that we created an online version which can be viewed on our website at:

[www.PhilaAthenaeum.org/online.html](http://www.PhilaAthenaeum.org/online.html)

This has been an eventful year for the Athenæum and for the new Executive Director, and I would like to take this opportunity to extend my appreciation to Director Emeritus Roger W. Moss, the members of the Athenæum Board, and the Athenæum membership in general for making my transition into this position a welcoming experience. Roger created a wonderful base on which to build expanded programs, a larger membership, and a greater public visibility; and we must be mindful of our charge, as stated by the founders in that original charter which was incorporated by the State of Pennsylvania on 5 April 1815, that we would collect materials which would enable us to “disseminate useful knowledge.” Collection and dissemination, conservation and education, these are the ideas of the original founders of the Athenæum, and they remain enduring values for us today.



Display of Temple Book. Designed by John Fatula, 2005. Loaned for exhibition by Charles King.



Mary Elizabeth Carter. *Millionaire Households and their Domestic Economy* (New York: D. Appleton & Company, 1903).

Cover Design by: Margaret Armstrong (1867-1944)

# ATHENÆUM STRATEGIC PLAN

APPROVED BY THE BOARD OF DIRECTORS

SEPTEMBER 18, 2008

Mission Statement:

**The mission of the Athenæum of Philadelphia is to provide programs and library services to its members, community and scholars throughout the world and to be a diligent steward of its National Historic Landmark building and its collections of books, architectural drawings, and photographs.**

## *Major challenges to the Athenæum*

- Its National Historic Landmark building requires constant and careful maintenance.
- Current membership needs to be expanded and renewed.
- Although the Athenæum has led other Philadelphia institutions in its embrace of technology, that technology (the Regional Digital Imaging Center and the Philadelphia Architects and Buildings Project) requires careful updating and maintenance in order to remain competitive in the expanding technologies available to libraries and museums.
- Its programs need to reach beyond the traditional membership in order to embrace community activities, particularly in the area of education, in order to maintain an active and visible presence.
- Its funding base must be expanded beyond the level of current support in order to maintain the building and expand programs.
- The Athenæum must continue to expand its collections and their availability to stakeholders.

## *The major proposals of the strategic plan*

- **BOARD**
  - **Goal:** Invigorate and diversify to represent the members' needs for different kinds of expertise.
    - **Strategy:** Establish an active Nominating Committee which will acquaint its members with the Athenæum general membership and the talents of that membership and will recruit new Board members
    - **Strategy:** Initiate annual Board retreats to reacquaint the Board with its goals and responsibilities
    - **Strategy:** Examine the committees provided in the bylaws to determine the relevance and need for new committees or to re-define standing committees already created.
    - **Strategy:** Combine Board members with members drawn from the general stockholders for committees in order to involve more of the membership in decision-making.

- **MEMBERSHIP:**
  - **Goal:** To increase net membership by 100 by 2010.
    - **Strategy:** Establish a working Board membership committee which will
      - Review membership categories and make recommendations on the feasibility of membership categories revision.
      - Actively recruit new members
    - **Strategy:** Design a new membership packet which more accurately reflects the activities and programs of the Athenæum in an effort to increase awareness of the organization.
  - **Goal:** Increase diversity in membership
    - **Strategy:** Reach out to the community for members who reflect a diverse clientele by creating more inclusive programming.
- **INFRASTRUCTURE: STAFF**
  - **GOAL:** Increase staffing for programming and education by one part-time person by the end of 2009, by one full time person by 2010.
    - **Strategy:** In 2009 gain the services of a Museum Education intern through the University of the Arts.
    - **Strategy:** By the end of 2009 seek grant funding for a full time education staff.
  - **GOAL:** Increase staffing for development by one person by 2010
    - **Strategy:** Explore funding sources for development staff
- **INFRASTRUCTURE: BUILDING**
  - **GOAL:** Complete inventory of building needs
    - **Strategy:** Prioritize those needs.
    - **Strategy:** Develop a capital improvement plan.
  - **GOAL:** Make necessary investments in our building and its systems.
    - **Strategy:** Instigate a capital campaign which will terminate in February 2014.
  - **GOAL:** Evaluate current and future space needs and develop plans to meet them
    - **Create a space for educational activities**
    - **Create space for additional staff.**
    - **Evaluate the use of off-site storage.**
    - **Strategy:** Seek the expertise of a space planner for the building.
  - **Goal:** Expand and diversify revenue sources in order to reduce reliance on the operating budget for long-term building needs by creating an endowment specifically for the building.

- **PROGRAMS/EXHIBITIONS**

- **GOAL:** Increase programming for families and children
  - **Strategy:** In 2009 mount the exhibition of Athenæum children's books, combined with the work of contemporary artists.
  - **Strategy:** Invite small classes of students from surrounding schools such as St. Peter's, St. Mary's, McCall School, and CHAD, to participate in Athenæum programs scheduled during the day.
- **GOAL:** Increase programming which will appeal to the community
  - **Strategy:** Reach out to the new residents on Washington Square through a series of focused open houses.
  - **Strategy:** Connect with the Free Library branch on South 7<sup>th</sup> Street to see if programs can be co-sponsored
  - **Strategy:** Focus the Programming Committee on outreach programs such as adult seminars, book groups, etc.
- **GOAL:** Develop a business plan for PAB and RDIC
  - **Strategy:** Gain the services of a business volunteer through Business Volunteers for the Arts.

- **FUNDING**

- **General:** Create a Development Committee which will lead efforts for both special and general funding.
- **GOAL:** Increase funding for building maintenance.
  - **Strategy:** In 2009 launch a capital campaign to deal with building needs.
- **GOAL:** Increase funding for staff needs.
  - **Strategy:** In 2008/2009 seek grant funds for education staff.
  - **Strategy:** Raise dues fees by 2010.

- **EVALUATION**

- **General:** Evaluate this plan in a special Board meeting on April 6, 2009 before the Annual Meeting.
- **Goal:** Plan to evaluate this plan on at least a yearly basis
  - **Strategy:** Plan for an annual Board Retreat which will include a re-examination of the Strategic Plan

# RESEARCH COLLECTIONS

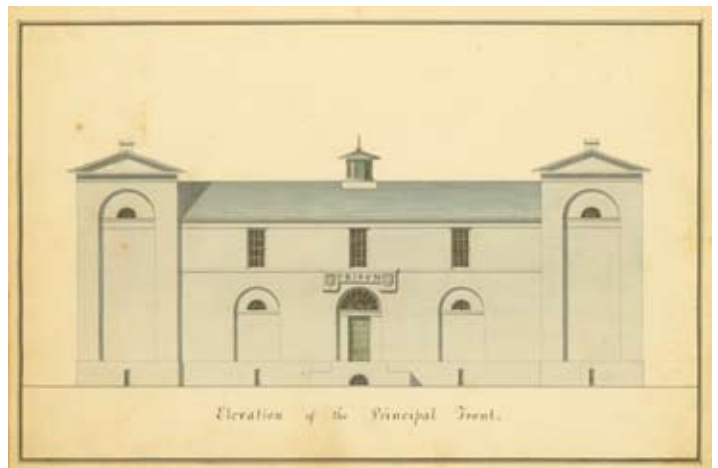
**Bruce Laverty, Curator**

Items in a wide range of collecting areas have been acquired by the Athenæum for the Research Collection since July 1, 2006. Some of the highlights are enumerated below.

## Architectural Drawings

Early in 2008 the Athenæum purchased a set of rare architectural drawings by Robert Mills, the first native-born, professional architect in Philadelphia. These drawings document the Burlington County Prison, at Mt. Holly, NJ, built in 1808. The set, which includes two design proposals, also contains a manuscript monograph of Mills's theory of prison design. These items were acquired from the Mt. Holly Lyceum.

Though a few drawings are acquired through purchase, most, thankfully, are made as gifts. It is by this means that the Athenæum added to its collection this 1940 Lloyd Malkus pencil sketch of the Philadelphia Savings Fund Society building at 12th & Market Streets. This handsome rendering, showing the brand new broadcasting antenna was a gift of Athenæum member, John Fatula.



**Above: Rendering of PSFS Building with New Radio Tower. Lloyd Malkus, 1940.**

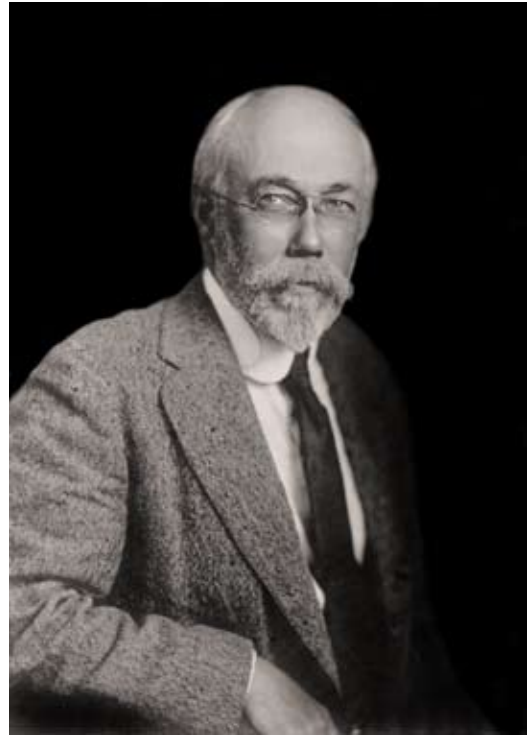
**Left: Burlington County Prison, Elevation of the Principal Front. Robert Mills, 1808.**

## Photographs

More than twelve cubic feet of photographs, negatives, scrapbooks, and manuscripts documenting the career of architect William Lightfoot Price were part of a gift/purchase agreement with architectural historian and Price biographer, George E. Thomas.

As part of the celebration of the 100th anniversary of the Walnut Lane Bridge, Executive Director David Young of Cliveden, made a personal gift of 67 glass lantern slides showing this engineering landmark's construction.

Peter Olson made a gift of several hundred large-format negatives and color transparencies he produced when preparing *Philadelphia Architecture: A Guide to the City*, published by the Foundation for Architecture in 1984. All of these images are now available on the Philadelphia Architects and Buildings website and are among the most requested for reproduction at the Athenæum.



William Lightfoot Price, c.1910.



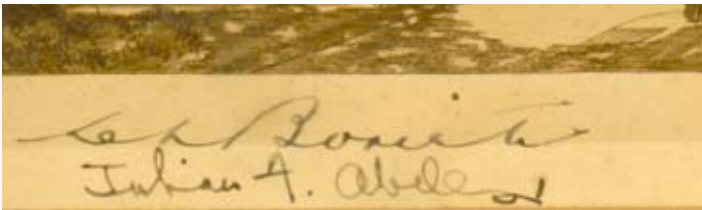
Walnut Lane Bridge, View of Completed Arches, 1908. From glass lantern slide, Walnut Lane Bridge Collection.



Rittenhouse Square, looking Northeast, c. 1986. Peter Olson Collection.



Philadelphia Museum of Art. Photograph of original drawing, 1917.



Detail of Julian F. Abele signature.

A unique addition to the photograph collection was a framed photograph of the final design drawing for the Philadelphia Museum of Art, signed by architects Horace Trumbauer, Clarence Clark Zantlinger, Charles Borie, and most significantly, Julian F. Abele. Abele was Trumbauer's chief designer, and the first African-American architect to graduate from Penn. This is the first and only surviving Trumbauer design document known to have Abele's signature.

## Prints

In June 2008, Mrs. Betty Domenico donated seven prints of Old Philadelphia sites done by illustrator Frank H. Taylor. These images, dating from the 1920s, show both prominent and lesser-known sites in the city. They join the watercolor painting by Frank Taylor which depicts A Southwestern View of Washington Square (1925), a gift of A. Sidney Jenkins in 1968.



Eastern Market, 5th & Ranstead Sts., c. 1892. By Frank H. Taylor.



A Southwestern View of Washington Square, c. 1925. By Frank H. Taylor.



## Digital Media

Beginning in 2007, Athenæum board member Hyman Myers and Curator of Architecture Bruce Laverty began a series of oral history interviews with senior members of the design community in Philadelphia. So far participants have included Henry Magaziner, Vincent G. Kling, Mather Lippincott, William S. Cornell, Herb Levy, Bernie Cywinski, Nick Gianopulos, and George D. Batcheler. This program of oral histories was supported by the Peggy and Ellis Wachs Family Foundation. In addition, existing audio tapes in the collection have been transferred to digital files. These include our 1994 symposium on Philadelphia theater buildings and a 1979 oral history with architect John Harbeson conducted by Sandra Tatman.

Athenæum staff continue to add “born digital” images to PAB. More than 100 buildings have been documented this way. Most of these images have been taken by Michael J. Seneca, director of the Regional Digital Imaging Center, and include such new sites as the Comcast Center at 17th and JFK Boulevard; Café Cret on the Benjamin Franklin Parkway. More often these images document the last days of significant structures, including the Race Street Firehouse; Odd Fellows Temple and Philadelphia Life Insurance Building on North Broad Street, all three of which were demolished for the Pennsylvania Convention Center Expansion.



Henry Magaziner.  
Photograph by Hyman Myers, 2007.



Cafe Cret, Benjamin Franklin Parkway, 2008.  
Photograph by Jim Carroll.



Demolition of Odd Fellows Temple, Broad & Cherry Streets, 2008,  
Photograph by Michael J. Seneca.

## Archives

When possible, the Athenæum seeks to acquire the archives of practicing architects who've worked in Philadelphia and the mid-Atlantic region. It has been our fortune to receive five architect's archives since 2007. Four of these are directly from Athenæum members, including the archives of John Todd, Edward Davis Lewis, (and his father, architect George M.D. Lewis), and Otto Reichert-Facilitates. The largest is the archive of Charles E. Broudy, who died in August 2007. Charles E. Broudy and Associates had forty years experience with merchandising and retail design, including such clientele as Lane Bryant, Gap and Ann Taylor. The entire Broudy office file and photographic archive is here as well as a sampling of the drawings (nearly 300 rolls). The collection is currently being processed and has limited accessibility.



Charles E. Broudy, c. 1993.

## Manuscripts

Among the manuscripts added to the collection since 2006 are the William L. Price papers noted above, and the 1869 founding document of the F.W. Devoe Company, one of the most important paint manufacturers of the 19th century. Also acquired was a collection of manuscript correspondence (1845-1852) of Louis Maillard, secretary to Joseph Bonaparte, concerning his work at Point Breeze.

Camden & Quelin Advertisement, c. 1900

## Unpublished Research Papers

The Athenæum's tradition of collecting unpublished research papers has continued since 2007. Athenæum member and architectural historian, Constance Greiff, added more than 23 cubic feet of records that document her research on John Notman and New Jersey architecture. The Historic American Buildings Survey transferred two cubic feet of field notes that document their Pennsylvania Quaker Meeting House Survey.

## Trade Materials

One collection of note is the Robert Camden Graphics Collection, the gift of Jody Holstein and Jill Phillips. Camden was a late nineteenth-century graphic artist who produced commercial designs for cigar boxes, note pads, school supplies, and greeting cards. Located at 729 Walnut Street, Camden was perfectly situated to serve the many printers, publishing houses and stationers that dominated this neighborhood between 1875 and 1940. The collection contains more than 600 original designs.



## Maps

The Lower Merion Historical Society donated a collection of maps, surveys and plot plans by Milton Yerkes and others that document the properties of more than 100 Lower Merion landowners between the years 1840 and 1940.

## Objects

Among the objects accessioned since 2006, perhaps the most unusual is a 24" marble core sample taken from the south side façade of Philadelphia's City Hall. The gift of member and preservation architect, Nan Gutterman, this piece gives just a hint of the total amount of marble used in this Victorian masterpiece.

The Athenæum acquired architect John Hilton Kell's 1928 Paul Philippe Cret Prize Medal for Architectural Design from an anonymous Athenæum

member. This member is responsible for more than 18 separate accessions within the last two years, (more than 30 within the last 20 years). These include virtually all of our collecting formats and document many of the nation's most significant architectural landmarks. All of these items are currently on long-term loan, but this generous member has agreed to transfer ownership upon his death. Until that time, the growing collection is both safe and available for research. We appreciate this person's consideration of the Athenæum with this material and their contribution to the research of generations of scholars to come.

The Athenæum continues to serve its members, its researchers and the community-at-large not only by collecting but by creating, maintaining and developing programs to make our collections available to a world-wide audience. Several of these efforts are discussed on the next page.



Paul Philippe Cret Prize Medal, 1928

## **Philadelphia Architects and Buildings**

Achieving a long-term goal of Athenæum staff, PAB project records now have a “maps” tab that directs users to an interactive web interface of more than a dozen historic maps and aerial photo sets. This interface continues to grow and is an integral part of the

## **Greater Philadelphia GeoHistory Network**

The Athenæum is host to a rapidly growing website that, like PAB before it, will forever change the way building research in Philadelphia is conducted. In 2005, with a \$50,000 pilot grant from the Andrew W. Mellon Foundation, the Athenæum, in cooperation with more than 30 local special-collections libraries, created the Greater Philadelphia GeoHistory Network. GPGN makes accessible a variety of geographic research source materials that, because of their rarity and fragile nature, have up till now been extremely difficult to review in person. These include nearly 1000 large format map and atlas plates that range in date from 1858 through 1962. Scanned at the Athenæum’s Regional Digital Imaging Center (RDIC), these high resolution images are available in the same viewing system developed for PAB. In addition to maps, there are nearly 3000 full-color plates from the Free Library of Philadelphia’s Hexamer General Surveys. The surveys, prepared between 1865 and 1899, each document an industrial site in the Philadelphia area with a perspective drawing, plot plan, and detailed textual description of the products and operations of the plants. Also available on the GeoHistory site are full text digitized versions of the 1856, 1858, 1861, and 1866 Philadelphia City Directories, which contain alphabetical listings of the city’s residents featuring address, occupation, and race. The GeoHistory Network can be visited at [www.philageohistory.org](http://www.philageohistory.org) The Preservation Alliance for Greater Philadelphia, with support from the Barra Foundation and other funders, is working with the Athenæum to scan hundreds more historic atlas plates and use them for its master preservation plan for the City of Philadelphia.

## **Avery Index OnLine**

Underwritten by a generous donation by one of its Board members, the Athenæum has purchased a subscription to the Avery Index OnLine. This online version of Columbia University’s index to more than 1500 periodicals on architecture, urban design, historic preservation, and urban planning history adds a key reference source for our researchers and staff. Avery Index OnLine is available for members and non-member readers alike, on the research workstation in the Busch Room.

## **Past Perfect**

Beginning in the spring of 2008, the Athenæum installed Past Perfect Museum Management software. The program, currently used by more than 15,000 museums, historical societies and libraries nationwide, provides a simple, user-friendly application for the management system for object, photo, archives and library catalogs. In addition, it provides streamlined record-keeping procedures for maintaining accession, loan and exhibition files. With the support of interns, Christina Rissell, Hannah Christensen, and Christine McMonagle, as well as volunteer member Mary Ellen Weber, the Athenæum has, for the first time, a unified accession list (that is, a single list that documents acquisitions for the archives, library and museum collections). More than 1500 accession records have been entered to date. Past Perfect also accommodates the use of digital images in record files and facilitates the creation of on-line exhibits

# THE ATHENAEUM OF PHILADELPHIA

## STATEMENTS OF FINANCIAL POSITION

June 30, 2008 and 2007

ASSETS	<u>2008</u>	<u>2007</u>
<b>CURRENT ASSETS</b>		
Cash and cash equivalents	\$ 966,624	\$ 1,147,869
Accrued interest receivable	9,971	12,236
Accounts and pledges receivable	229,829	895,975
Prepaid insurance	<u>1,762</u>	<u>1,762</u>
<b>Total current assets</b>	<u>1,208,186</u>	<u>2,057,842</u>
<b>INVESTMENTS (Note 2)</b>		
Bonds	762,140	888,165
Preferred stocks	-	3,950
Mutual funds	<u>6,729,022</u>	<u>5,876,763</u>
<b>Total investments</b>	<u>7,491,162</u>	<u>6,768,878</u>
<b>OTHER ASSETS</b>		
Beneficial interest in perpetual trust (Note 2)	5,256,932	5,999,855
Fixed assets, net of depreciation (Note 3)	773,191	878,672
Inventory – “Philadelphia Victorian”	2,660	3,187
Perpetual insurance deposits	<u>4,730</u>	<u>4,730</u>
<b>Total other assets</b>	<u>6,037,513</u>	<u>6,886,444</u>
<b>Total assets</b>	<u>\$14,736,861</u>	<u>\$15,713,164</u>
<b>LIABILITIES AND NET ASSETS</b>		
<b>LIABILITIES</b>		
Accrued expenses	\$ 2,582	\$ 6,558
Payroll taxes withheld	<u>1,719</u>	<u>2,063</u>
<b>Total liabilities</b>	<u>4,301</u>	<u>8,621</u>
<b>NET ASSETS</b>		
<b>Unrestricted</b>		
Operations	437,433	423,120
Board designated –		
Net Assets Functioning as Endowments (Note 4)	2,235,176	2,345,463
Elkin Reserve	298,344	292,830
Net investment in plant	<u>773,191</u>	<u>878,672</u>
<b>Total unrestricted</b>	<u>3,744,144</u>	<u>3,940,085</u>
<b>Temporarily restricted (Note 4)</b>		
Endowment income functioning as endowments	2,118,199	2,504,948
Other	<u>260,341</u>	<u>286,556</u>
<b>Total temporarily restricted</b>	<u>2,378,540</u>	<u>2,791,504</u>
<b>Permanently restricted endowments (Note 4)</b>	<u>8,609,876</u>	<u>8,972,954</u>
<b>Total net assets</b>	<u>14,732,560</u>	<u>15,704,543</u>
<b>Total liabilities and net assets</b>	<u>\$14,736,861</u>	<u>\$15,713,164</u>

# THE ATHENAEUM OF PHILADELPHIA

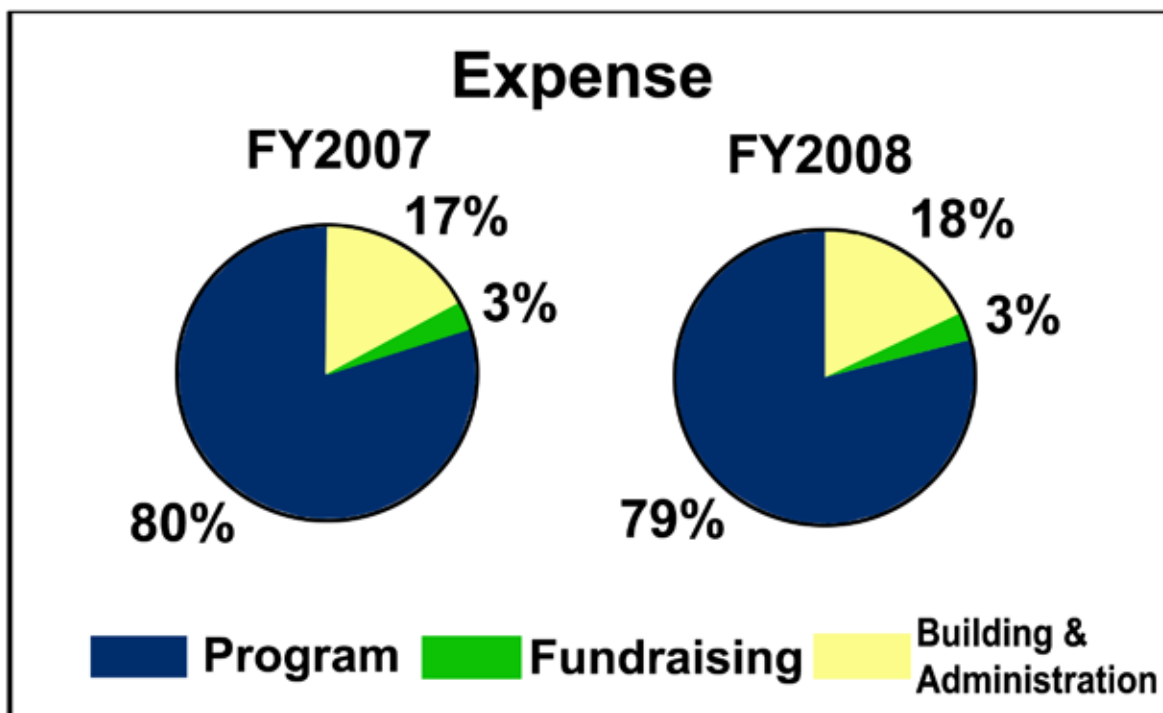
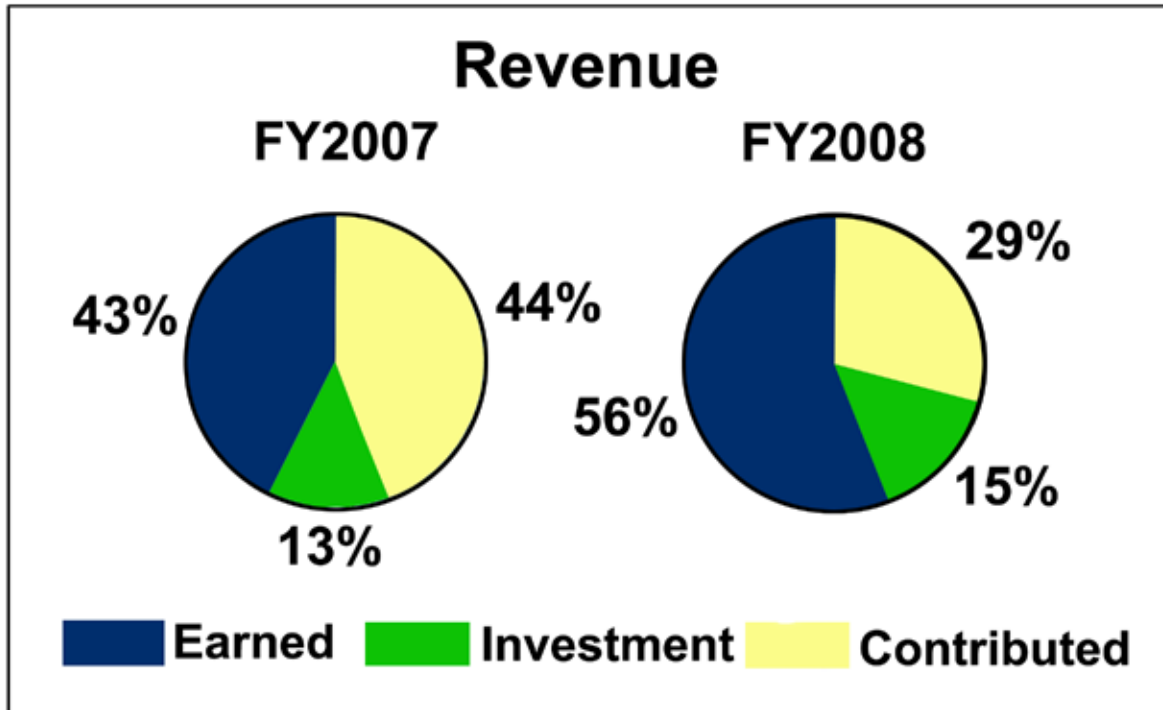
## STATEMENT OF ACTIVITIES AND CHANGES IN NET ASSETS

Year ended June 30, 2008 with Summarized Information for 2007

	<u>Totals</u>	
	<u>2008</u>	<u>2007</u>
<b>Support and revenue</b>		
<b>Support</b>		
Member dues	\$ 157,900	\$ 161,260
New memberships	41,200	37,100
Income from dedicated trust	287,000	669,864
Contributions	569,623	1,023,094
Grant income	<u>53,000</u>	<u>135,860</u>
Total support	<u>1,108,723</u>	<u>2,027,178</u>
<b>Revenue</b>		
Endowment income designated for current operations	248,724	256,740
<b>Programs</b>		
Members	4,020	4,020
Outside services	97,700	135,320
Miscellaneous income	28,044	17,577
Sale of publications	8,450	15,387
Other investment income	<u>28,379</u>	<u>20,242</u>
Total revenue	<u>415,317</u>	<u>449,286</u>
Net assets released from restrictions (Note 5)	-	-
Total support and revenue	<u>1,524,040</u>	<u>2,476,464</u>
<b>Expenses</b>		
<b>Program</b>		
Public programs	127,651	124,863
Public research support	193,615	188,815
Library services	251,328	307,584
Collections	104,264	86,640
Operation of Museum/Library building	<u>354,646</u>	<u>341,762</u>
Total program expenses	<u>1,031,504</u>	<u>1,049,664</u>
<b>Supporting services</b>		
Management and general	229,849	224,237
Development and fund-raising	<u>40,072</u>	<u>36,615</u>
Total supporting services	<u>269,921</u>	<u>260,852</u>
Total expenses	<u>1,301,425</u>	<u>1,310,516</u>
Excess (deficit) of support and revenue over expenses	222,615	1,165,948
<b>Other changes</b>		
Investment return net of amounts designated for current operations	(451,675)	707,876
Unrealized gain (loss) on beneficial interest in perpetual trust	(742,923)	16,441
Purchase of fixed assets/other transfers	<u>-</u>	<u>-</u>
Net change in net assets	<u>(971,983)</u>	<u>1,890,265</u>
<b>Net assets</b>		
Beginning of year	<u>15,704,543</u>	<u>13,814,278</u>
End of year	<u>\$14,732,560</u>	<u>\$15,704,543</u>

# The Athenaeum of Philadelphia

Year ended June 30, 2008 with Summarized Information for 2007



# NAMED BOOK FUNDS & ENDOWMENTS

Roland Taylor Addis Book Fund  
Edward Lee Altemus Book Fund  
Architectural Advisory Committee Endowment  
Architecture Acquisitions Fund  
Arronson Foundation Conservation Fund  
Thomas G. Ashjean III Book Fund  
Graham Gaylord Ashmead Book Fund  
Clare Austin Baird Book Fund  
Barra Foundation Symposium Fund  
Isaac Barton Fund  
Arnold A. Bayard Fund  
Alice Beardwood Book Fund  
Alice Beardwood Lecture Fund  
Emma Beerman Book Fund  
Hannah G. Brody Fund  
Gladys Brooks Fund  
Richard Bull Fund  
Struthers and Katherine Newlin Burt Book Fund  
Henry Paul Busch Book Fund  
Claneil Foundation Conservation Fund  
Benjamin Coates Memorial Fund  
Arthur G. Coffin Fund  
Elliott Cresson Fund  
John M. Dickey Book Fund  
Samuel J. Dornsife Book Fund  
Franklin and Helen Eden Book Fund  
Annette Harsipe Emgarth Book Fund  
Armand G. Erpf Book Fund  
Thomas Clifton Etter Book Fund  
Guy and Joanne Garrison Book Fund  
Helen H. Gemmill and Kenneth W. Gemmill Book Fund  
Francis R. and Jean L. Grebe Lecture Fund  
Eleanor R. Green Book Fund  
Albert M. Greenfield Memorial Book Fund  
F. Otto & Dorothy W. Haas Fund  
John Otto Haas Book Fund  
Thomas Bailey Hagen Book Fund  
Edith Ogden Harrison Lecture Fund  
Richard Hubbard Howland Book Fund  
Constance A. Jones Book Fund  
Arthur M. Kennedy Memorial Fund  
Fenton Keyes Memorial Book Fund  
Perot Lardner Fund  
Eleanor Bird Light Operations Fund  
Eleanor Bird Light Decorative Arts Conservation Fund  
John Livezey Book Fund  
David R. Longhi Book Fund  
H.J. Magaziner Annuity Fund  
Stephen Walter Mason, Jr. Conservation Fund  
Stephen Craig McCormick Book Fund  
Jane D. Rupp McPherson Book Fund  
Anna C., May C. and Walter J. Miller Book Fund  
Roger W. Moss Book Fund  
Roger W. Moss Fund for Staff Salaries  
Roger W. Moss Symposium Fund  
H.S. Prentiss Nichols Book Fund  
James F. O’Gorman Book Fund  
Charles Perot Fund  
Edward Perot Fund  
Charles E. Peterson Fellowship Fund  
Charles E. Peterson H.A.B.S. Prize Fund  
Beryl and Rosemond C. Price Conservation Fund  
Emilie K. and Robert S. Price Conservation Fund  
Robert L. Raley Book Fund  
Lewis M. Robbins Book Fund  
Ellen L. Rose Book Fund  
Helen T. Rosenlund Memorial Book Fund  
Ralph M. Sargent Memorial Book Fund  
John Savage Fund  
William L. Schaffer Book Fund  
Mona Fisher Schneidman Book Fund  
Florance Jenkins Scott Book Fund  
Jacob L. Sharpe Fund  
Shober Family Book Fund  
Robert C. Smith Conservation Fund  
Mary Waidner Snow Garden Fund  
Walter Stait Book Fund  
Charles Wharton Stork Lecture Fund  
William Strickland Lecture Fund  
Elizabeth P. Van Pelt Fund  
George Vaux Fund  
Edna and Charles Weiner Book Fund  
Francis Macomb Wetherill Fund  
Barry F. Wiksten Book Fund  
Barry F. Wiksten Building Fund  
Emily W. and Franklin H. Williams Conservation Fund  
Moses A. and Mollie Zebooker Memorial Book Fund



# DONORS

## Gifts and In-Kind Donations (July 1, 2006 - June 30, 2008)

Stanley E. Abelson  
Robert I. Abramowitz, Esq.  
Joseph L. Abriola, Jr.  
Joseph L. Abriola  
Charles S. Acker  
Carlos Rodriguez Acosta  
David Acton  
Jean Shaw Adelman  
Avram G. Adler  
John Allen Affleck  
George M. Ahrens  
Mrs. Walter M. Aikman  
Philip Alpers  
Eleanor W. Altemus  
Nicholas Ward Altemus  
Mrs. Richard C. Alton  
Elizabeth Ann Anderson  
Thomas A. Appelquist, AIA  
Betty April  
Peter C. Archer, AIA  
Pierce Archer  
Peter F. Arfaa, FAIA  
Mrs. James S. Armentrout, Jr.  
Elizabeth Ann Armour  
Richard Maxwell Armstrong, Jr.  
Mrs. John F. Arndt, Jr.  
John L. Asher, Jr.  
Theodora W. Ashmead  
Richard S. Auchincloss, Jr.  
David C. Auten  
Mrs. Theodore C. Aylward  
Jacqueline H. Bagley  
John A. Baird, Jr.  
Cecil Baker, AIA  
Donna E. Baker, Esq.  
Mrs. Benjamin Baldrige  
James M. Ballengee, Jr.  
Mrs. Edwards Baltzell  
Mrs. Charles Bangert, Jr.  
Bridget D. Baratta  
Barra Foundation, Inc.  
The Honorable Harvey Bartle, III  
The Reverend John Dixon Bartle  
George D. Batcheler, Jr., EAI  
Gerald H. Batten

Jane Batten  
David L. Bauman  
Mary Ivy Bayard  
Donald Bean  
Mrs. Joseph T. Beardwood, III  
Mrs. Alexander G. Bearn  
Flora L. Becker  
Mark Bedwell  
Edward P. Bell, AIA  
Charles V. Belson, AIA  
James Benenson, Jr.  
Georgia C. Bennett  
D. Jeffry Benoliel  
Peter A. Benoliel  
Helen Bershad  
Sigrid Berwind \*  
Glenn Bickel  
Bonnie Bickman  
James C. Biddle  
Letitia Copeland Biddle  
Nicholas Biddle, Jr.  
Suzanne H. Binswanger  
Mrs. Harry C. Bishop  
Rolin P. Bissell  
Frederick L. Bissinger, Jr., AIA  
Joan Stroud Blaine  
John W. Blatteau, AIA  
Alvin Block  
Amy A. Bluemle  
Jean L. Blumberg  
Beatrice A. Bock  
Paul T. Bockenbauer  
Mrs. James F. Bodine  
Barron Bohnet  
Kiki Bolender, AIA  
Eugene A. Bolt, Jr.  
Cheryl A. Bombeck  
Stephen M. Bonitatibus, AIA  
Frank Harris Borden, Jr.  
Edward T. Borer  
Edith F. Borie  
Helen R. Bosley  
Audrey Ann Bostwick  
Brendan P. Bovaird, Esq.  
Mrs. Frank J. Bowden, Jr.

Nathaniel R. Bowditch  
Mark A. Bower  
John R. Bowie, AIA  
Dennis J. Boylan  
H. William Brady  
Luther W. Brady, Jr., M.D.  
Richard A. Brand, M.D.  
Bonnie S. Brier  
John M. Briggs  
George R. Brodie, Jr.  
William Brodsky  
William D. Brookover  
Joshua Broudy  
C. Dudley Brown, FASID  
Mrs. Fraser H. Brown  
Mary Moore Brown  
Stanhope S. Browne  
Walter W. Buckley, Jr.  
Carter R. Buller  
William C. Bullitt  
Richard D. Bullock  
G. Theodore Burkett  
Charles H. Burnette, FAIA  
Janet Burnham  
The Honorable Ann M. Butchart  
Howard Butcher, IV  
Mrs. Russell Byers  
Mrs. R. Kent Cadwalader  
Mrs. Perry G. Caimi  
Alexander Grant Calder  
Robert E. Campbell, M.D.  
Ross L. Campbell  
Samuel A. Cann  
James Tyson Carson  
Amanda Casper  
Mrs. Cummins Catherwood, Jr.  
D. Hughes Cauffman  
Mrs. John R. Caulk, III  
Elizabeth M. Cecil  
William H. Chandlee, III  
Mara Cherkasky  
Dana K. Chesnos  
Mrs. Scott J. Childress  
Per W. Christensen  
Denise DeLaurentis Cilio

## Donors

Citigroup Foundation  
Anne Clattenburg  
Theodore Clattenburg, Jr.  
Doug Clouse  
Mrs. Benjamin Coates  
Donald R. Cochran Jr.  
Rhonda R. Cohen, Esq.  
Sidney Cohen  
Trudy Lee Cohen  
John R. Collett  
Robert L. Collings  
Daniel W. Collins  
Robert L. Comis, M.D.  
Ian M. Comisky  
Helen-Ann Comstock  
Peter Conn, Ph.D.  
Charles J. Connick  
William L. Conrad  
Mrs. Edwin N. Conroy  
Gordon S. Converse  
Professor Patricia Conway  
Peter F. Cooke  
Mrs. Howard Coonley, II  
David Y. Cooper, M.D.  
Gerald M. Cope, FAIA  
J. William Cornell  
Patricia Richards Cosgrave  
Mrs. Edward W. Coslett, Jr.  
Fredericka E. Courpas  
Mrs. David M. Cox  
Gary A. Cox  
James D. Crawford  
Peter S. Cressman  
Dr. Donald H. Cresswell  
John Crispino  
J. Lewis Crozer Library  
Charles O. Culver  
Rudy E. D'Alessandro  
Francis James Dallett \*  
Matthew Clarkson Dallett  
The Honorable Stewart Dalzell  
Davis d'Ambly  
L. Daniel Dannenbaum  
Charles J. Davidson  
Mrs. David R. Davis  
Mrs. Harold M. Davis  
The Honorable Theodore Z. Davis  
William M. Davison, 4th  
Professor David G. De Long  
Patrick Dean  
Matthew J. DeJulio, Jr.  
Michael R. DeLuca  
The Honorable Pamela P. Dembe  
Mary Werner DeNadai, FAIA  
Robert W. Denious  
A. Louis Denton, Esq.  
Joanne Denworth  
Maude T.M. deSchauensee

Richard R. Di Stefano  
Leonardo Diaz, AIA  
Mrs. Willem K. Dikland  
Julie A. Dobson  
Mrs. David W. Doelp  
J. B. Doherty  
Sandy F. Dolnick  
Allan Domb  
Elizabeth Domenico  
Kevin F. Donohoe  
Mrs. Thomas H. Doolan  
David M. Doret  
G. Morris Dorrance, Jr.  
William G. Dorsey  
Constantine G. Doukakis, P.E.  
Diane Fox Downs  
Lee F. Driscoll, Jr.  
Sonya D. Driscoll  
Margaret P. Duckett  
Deanna Pitcairn & David Bruce Duncan  
Matthew D. Dupee  
Robert H. Dyson, Jr.  
John J. Dziedzina  
J. Michael Dzuba  
Barbara Eberlein, ASID  
Bernard L. Edelstein  
Eden Charitable Foundation  
Mrs. Thomas W. Eglin  
David M. Egnor  
Dr. & Mrs. Alexander Ehrlich  
Archibald C. Elias, Jr. \*  
Linda V. Ellsworth  
Helen W. Drutt English  
Ilona S. English  
Johnathan White Ericson  
Otis W. Erisman  
Robert A. Esposito  
Winfield Scott Essex  
Thomas C. Etter, Jr.  
Leonard Evelev  
Ewing Cole  
Kathleen Fahy  
Jean M. Farnsworth  
Caroline W. Farr  
Mrs. F. W. Elliott Farr \*  
John Fatula, AIA  
Mrs. J. Dennis Faucher  
Helen F. Faust  
Mrs. Harry Feldman  
Donald L. Felley  
Samuel S. Fels Fund  
Amy L. Finkel  
Mrs. William E. Fischelis  
David H. Fischer, M.D.  
Marjorie S. Fiterman  
Mrs. William Thomas Fleming, Jr.  
Vaughan Fletcher  
Michael O'S. Floyd, Esq.

Mrs. Robert T. Foley  
Christopher Forbes  
Helen H. Ford  
Daniel W. Foster  
Doreen Foust  
Denise R. Fox  
Robert A. Fox  
Spencer W. Franck, Jr.  
Philip Edward Franks, AIA  
Mrs. Clair G. Frantz  
J. Stuart Freeman, Jr.  
Mrs. Robert A. Freeman  
Samuel M. Freeman, II  
Dale H. Frens, AIA  
Mrs. Stanley B. Frenze  
Nancy Frenze  
Mrs. Jack M. Friedland  
Jack Friedman  
Frudakis Studios, Inc.  
Mrs. Richard H. Gabel  
Elizabeth L. Gagne  
Peter G. Galantino  
Rollin M. Gallagher, III, M.D.  
John Andrew Gallery  
Dolores Garadetsky  
Ann Garrison  
Dr. Guy G. Garrison  
J. Ritchie Garrison  
Robert N. Garrison  
Mrs. Anthony N.B. Garvan  
Dr. Beatrice Garvan  
Steven C. Gatschet, AIA  
Elizabeth H. Gemmill  
William G. Gerhard  
Nicholas L. Gianopulos  
William J. Gies, II  
Robert J. Gill, M.D.  
Dixon F. Gillis  
Frank Giordano  
GlaxoSmithKline Foundation  
Richard C. Glazer  
Glenmede Trust  
Stephen Goff  
Barry Goodkin  
Mrs. Gray C. Goodman  
Betty Gordon  
Mrs. Kenneth H. Gordon, Jr.  
Dr. Sally Barringer Gordon  
Natalie J. Gorin  
Thomas Hamilton Gouge, M.D.  
Mrs. B. David Grant  
Carole Haas Gravagno  
David M. Gray  
Robert L. Gray, III  
Francis R. Grebe  
James Lowell Fales Green, Esq.  
Jane Axelrod Green  
Alan Jay Greenberger, AIA

## Donors

Vincent L. Gregory, Jr.  
Mrs. Robert Greiff  
John M. Groff  
Rebecca T.L. Bowden Guenther  
Michael James Guhanick  
Gene F. Guidi  
Leslie D. Gundry  
Mrs. Robert C. Gunning  
Chandrakant R. Gupta  
Nan R. Gutterman  
Mrs. John H. Guy \*  
John Otto Haas  
Victoria S.B. Haas  
Otto Haas Charitable Trust #2  
Thomas B. Hagen  
The Carol Ann & Ralph V. Haile, Jr.  
US Bank Foundation  
Elizabeth Haimes  
Merrill Dyshel Hakim  
Christopher R. Hall, AIA  
Michael P. Halpert  
Nathaniel P. Hamilton  
Mrs. Samuel M.V. Hamilton  
Mary Brown Hamingson  
Mrs. William L. Hanaway, Jr.  
Morris C. Hancock, AIA  
Harry Hare  
Harry T. Hare  
John G. Harkins, Jr.  
Stephen J. Harmelin  
William Harral, III  
Russell T. Harris, Jr.  
Eric Mann Hart  
Henry G. Hart, Jr.  
Gregory M. Harvey, Esq.  
Mrs. John Harvey  
Thomas Biddle Harvey  
Christie W. Hastings  
Denison Hatch  
Michael J. Haut, M.D.  
Harriette C. Hawkins  
Dominique Hawkins  
Mrs. William E. Hedges  
Guy M. Hedreen  
Frederick Heldring  
James D. Hellyer, AIA  
Steven D. Hendricks  
Hope Coppage Hendrickson  
John H. Hepp, IV  
Bruce Herndon  
Harold D. Hershberger, Jr.  
William D. Hershey  
Mrs. William D. Hershey  
Mrs. Edward C. Hess  
Mrs. Robert Blake Hessler  
Harry Edward Hill, III  
James Halpin Hill, Jr.  
Louise Lark Hill

Amy Hillier  
Charles Lewis Hillis, Jr.  
Richard D. Hilton  
Mrs. Alan R. Hirsig  
Historic American Buildings Survey  
Lynn Leonard Hitschler  
Joy Hockman  
Mari Katherine Hodges  
Julie Elizabeth Hoffman, AIA  
Mrs. Vernon L. Hoffman  
Alvin H. Holm, AIA  
Natica Verry Holmsley  
Jody Holstein & Jill Phillips  
Leo A. Holt  
Frederick P. Holzerman  
Mrs. W. Ralph Hopkin  
Mrs. Warren B. Hopkins  
John J. Hopkinson  
Finn Hornum  
Dona W. Horowitz-Behrend, Ph.D.  
Joseph J. Horvath  
Robert J. Hotes, AIA  
Lawrence O. Houstoun, Jr.  
Hower House  
Mr Richard H. Howson  
Cynthia A. Hudson  
Mrs. Christian Hueber, II  
Richard W. Huffman, FAIA  
Francis J. Hughes  
Professor Thomas P. Hughes  
Mrs. Dennis Hummel  
Mrs. John Frazier Hunt  
John Frazier Hunt  
Susannah T. Hunter  
Richard W. Hurd  
Jennifer Hurley  
Thomas M. Hyndman, Jr.  
Louis Michael Iatarola  
Adam Iezzi  
Andrew Wood Ingersoll  
Charles J. Ingersoll  
Carol Forester Innes  
William B. Irvine, III  
Jordan L. Irving  
Alix Jacobs  
Mrs. Joseph H. Jacovini  
Deirdre Gordon Jacques  
Lucy Bell W. Jarka-Sellers  
William Warner Jeanes Jr.  
Scott M. Jenkins  
Dr. Ejner J. Jensen  
Arthur W. Jones  
James H. Jones  
William J.D. Jordan  
Arthur Judson, II  
Edward J. Kaier Esq.  
Philip L. Kampf  
Leroy E. Kean

Anthony J. Kelly, AIA, PE  
David S. Kelso  
Michael D. Kennedy  
Christopher D. Kenney, AIA  
Gilbert Kerlin  
Michael A. Kihn, AIA  
Blair King  
Charles King  
Steven B. King, Esq.  
James Nelson Kise, AIA  
Igor Kiselev  
Milton N. Kitei, M.D.  
Janet S. Klein  
Mrs. Louis Klein  
Mrs. Joseph S. Kleinbard \*  
Mrs. Morton M. Kligerman  
Thomas A. Kligerman  
John K. Knorr, M.D., III  
George F. Koch, Jr.  
F. Peter Kohler, M.D.  
Joseph K. Koplin  
Dan Peter Kopple, AIA  
Berton E. Korman  
Darrell L. Kratzer, AIA  
Mary Louise Krumrine, Ph.D.  
Mrs. C. Scott Kulicke  
Kathleen A. Kurtz  
Shirley E. Laird  
Bette E. Landman  
Charles B. Landreth  
Victor J. Lang, Jr.  
Marc S. Lapayowker, M.D.  
John F. Larkin, EAIA  
Michael D. LaRue  
Charles Latham, Jr.  
Deborah B. Latta  
Frederick J.M. LaValley  
Susan G. Lea  
John Y. LeBourgeois  
Mrs. Benjamin H. LeBoutillier  
Mrs. Richard W. Ledwith  
Gabriele W. Lee  
Jonathan Lee  
Mrs. Richard Sandoval Lee  
Robert Harris Lee, Jr.  
Sylvia K.M. Lee  
Thomas A. Lee  
Ilene Lefko  
Mrs. E.B. Leisenring, Jr.  
H.F. Lenfest  
Jeanette Lerman-Neubauer  
Adam Levine  
John A. Levitties  
Edward Davis Lewis  
Dr. Michael J. Lewis  
Marion Leigh B. Lewis  
Michelle Liao  
Robert E. Linck

## Donors

David A. Linfoot  
J. Barton Linvill  
H. Mather Lippincott, Jr., EFAIA  
John Strawbridge Lloyd  
Mark Frazier Lloyd  
Eva G. Loeb, M.D.  
Robert A. Lonergan  
David Long  
Peter S. Longstreth  
Richard G. Lonsdorf, M.D.  
Mrs. Joseph S. Lord, III  
Jax Peter Lowell  
Lower Merion Historical Society  
Alexander S. Ludwig  
Barbara B. Lunden  
Marcello A. Luzi, ASID  
Lyman & Ash  
Nancy L. Machinist  
MacKellar, Smiths & Jordan  
Osborne P. Mackie  
William J. MacMurtrie, Jr., M.D.  
Henry J. Magaziner, EFAIA  
Eileen M. Magee  
Mrs. Howard M. Magen  
Barbara Maher  
Edwin B. Mahoney  
Mrs. Seymour G. Mandell  
Mrs. Francis R. Manlove  
Brian E. Mann  
Carl M. Mansfield, M.D.  
Jerome M. Marcus  
Donald T. Marshall  
Dr. Katharine Martinez  
Gregory S. Maslow, M.D.  
Charles E. Mather, III  
Mrs. Robert Worrell Mather  
Lustrerie Mathieu  
David W. Maxey  
Susan A. Maxman, FAIA  
Robert M. Maxwell  
Robert C. McAdoo  
Mrs. Thomas F. McCallum  
Katharine Vaux McCauley  
Peter McCausland  
John F. McCloskey, Jr.  
Stephen J. McConnell  
Terrence M. McDermott  
Ellice McDonald, Jr.  
Margaret M. McDonough  
John E. McGaw  
James F. McGillin, AIA  
Mrs. Sam S. McKeel  
Marthe T. McKinnon  
Bruce McKittrick  
Mrs. Collin F. McNeil  
Robert L. McNeil, Jr.  
John A. McNichol  
Joseph McPeak  
Mary Patterson McPherson  
John J. Medveckis  
Lawrence F. Meehan  
Leonard Mellman  
John L. Melvin, M.D.  
Stanley Merves  
The Reverend John E. Midwood, Jr.  
Carolyn Mies, M.D.  
Madelyn Mignatti  
Mrs. David T. Miller  
Mrs. John A. Miller  
Jonathan W. Miller  
Madeline E. Miller  
Walter J. Miller Trust  
Michael J. Mills, FAIA  
Mrs. Arthur Milner  
John D. Milner, FAIA  
Joseph A. Minott, Jr.  
Hansel B. Minyard  
Eric E. Mitchell  
Mrs. Henry Mitchell  
Barbara J. Mitnick, Ph.D.  
Allen John Model  
Donald L. Montanaro  
Mrs. Edward A. Montgomery, Jr.  
C. J. Moore  
Constance C. Moore  
The Reverend Rudolph A. Moore  
Mrs. William H. Moorhouse, Jr.  
Celeste A. Morello  
J. P. Morgan Chase & Co.  
Mrs. C. Christopher Morris, II  
Professor Eleanor Smith Morris  
Andrew Craig Morrison, AIA  
Milton J. Moser  
Arthur H. Moss  
Dr. Roger W. Moss  
Carol Baer Mott  
Mrs. Craig W. Muckle  
Charles G. Muir  
Kathleen T. Mulhern  
Kristin F. Mullaney, RA  
Stephen P. Mullin  
Christine A. Mumm  
James G. Mundy, Jr.  
Herminio Muniz, M.D.  
Mrs. Raymond J. Munsch  
Albert B. Murphy, III  
Daniel I. Murphy  
Edward F. Murphy  
Heather Murphy  
Dr. William J. Murtagh  
Hyman Myers, FAIA  
Nancy H. Nance  
Harriet S. Nash  
Henry N. Nassau  
National Trust for Historic Preservation  
John R. Neal  
Arthur E. Newbold, IV  
Theodore Newbold  
Charles Warren Nichols, M.D.  
John H. Norton  
Barbara Novak  
Bridget M. Nurock  
John Carl Oberholtzer, M.D.  
Daniel Patrick O'Connell  
Joseph A. O'Connor, Jr.  
Professor James F. O'Gorman  
Ohio University Press  
William Francis O'Keefe, Jr.  
Mrs. A. Douglas Oliver  
Peter Olson  
Shaun F. O'Malley  
Hugh O'Neill, M.D.  
Thomas B. O'Rourke  
Dr. David G. Orr  
Mrs. Richard W. Ostrander  
Lambert B. Ott  
Richard W. Palmer  
Deno D. Papageorge  
Jennifer L. Parish, M.D.  
Lawrence Charles Parish, M.D.  
John N. Park, Jr.  
Mrs. Edward J. Parker  
The Reverend Richard O. Partington  
Melba Pearlstein  
Mrs. H. Dawson Penniman  
Pennsylvania Academy of the Fine Arts  
Pennsylvania Capitol Preservation  
Committee  
William H. Pentz  
Suzanne Baird Perot  
Elizabeth W. Pesce  
Myles Standish Pettengill, Jr.  
Philadelphia Exhibitions Initiative  
The Philadelphia Contributionship  
Philadelphia Fountain Society  
Philadelphia Print Shop  
Mrs. John Pickering, II  
Paul E. Pickering  
David N. Pincus  
Pittsburgh History & Landmarks  
Foundation  
PNC Bank N.A.  
Nancy D. Pontone  
Mrs. Herbert Popper  
Portsmouth Athenaeum  
Nancy S. Powell  
John Praksta  
Joseph H. Pratt, II  
The Honorable Gene E. K. Pratter  
Mrs. Beryl Price  
Philip Price, Jr.  
Robert S. Price  
Michael L. Prifti, AIA  
Alfred C. Prime

## Donors

Edwin N. Probert, II  
Helen P. Pudlin  
The Reverend J. Michael Pulsifer  
Dr. Alexander D. Rae-Grant  
Robert L. Raley, AIA  
Mr. & Mrs. Maxwell O. Ramsland, Jr.  
Mrs. David S. Randolph  
John Randolph  
Pierre T. Ravacon  
William Dickie Ravdin  
Henry Hope Reed  
Joan Curtis Reese  
Otto Reichert-Facilitates, FAIA  
Robert D. Reinecke, M.D.  
John J. Reinhard, M.D.  
The Honorable Marjorie O. Rendell  
Edward O. F. Rhoads  
Thomas G. Rice  
The Reverend David C. Rich  
David H. Richards  
David J. Richards, M.D.  
William Burpee Richards  
Thomas M. Ridington  
Charles G. Roach, Jr.  
Margaret A. Robb  
Theodore Robb  
Eleanor A. Robbins  
Donald H. Roberts, Jr.  
Elizabeth D. S. Roberts  
Margaret M. Roberts  
Thomas B. Roberts  
Michael F. Robinson  
Neal I. Rodin  
David C. Rogers  
Lila G. Roomberg, Esq.  
Suzanne Root, Esq.  
Vincent A. Root  
The Reverend Terence C. Roper  
Gerald B. Rorer  
Ellen L. Rose  
Dorothy Roseman  
Rosenbach Museum & Library  
Lewis C. Ross  
Steven D. Rothman  
David B. Rowland  
Alan Rubin  
Elizabeth M.P. Rubin  
Daniel G. Russoniello, AIA  
Caroline Ware Rusten  
Arthur M. Ryan  
Marvin L. Sachs, M.D.  
Ralph David Samuel  
Hugh A.A. Sargent, Esq.  
Jane Cummin Sargent, M.D.  
S. Valence Sauri, D.D.S.  
Charles C. Savage  
Henry L. Savage, Jr.  
George Sayen

Rachel Simmons Schade, AIA  
Harry George Schalck  
Harry Carl Schaub  
James Henry Scheck  
Guy Lacy Schless, M.D.  
Charles D. Schneider  
Mrs. Marc Clarkson Schoettle  
Matthew F. Schooley  
Mrs. M. William Schwartz  
Nora M.P. Schwarz  
Robert Devlin Schwarz, Jr.  
Buck Scott  
Denise Scott Brown, RIBA  
Peter A. Sears  
Jo Valerie Seibert  
David Seltzer  
Dianne L. Semingson  
Michael J. Seneca  
Ronald E. Shaffer  
Mrs. Hass Shafia  
The Honorable Norma L. Shapiro  
Paul G. Shenkle  
James W. Shepard, M.D.  
A. Lincoln Sherk  
Henry H. Sherk, M.D.  
Mrs. Henry H. Sherk  
Marciarose Shestack  
Robert J. Shusterman, Esq.  
Jack R. Silverberg  
Murray A. Simmons  
Katherine S. Simons  
Allen J. Simpson  
Rebecca Pepper Sinkler  
Mrs. Nathan Sivin  
Robert M. Skaler  
George C. Skarmeas, AIA  
Fred Slavin  
Edward D. Slevin  
A. Gilmore Smith, Jr.  
Gray Smith, AIA  
Paul C. Smith  
Robert M. Smith  
Stanton N. Smullens, M.D.  
Charles Darwin Snelling  
Edward M. Snider  
Richard Wood Snowden  
Howard M. Snyder, III, M.D.  
Martin Avery Snyder  
Lawrence J. Solin, M.D.  
Arthur R.G. Solmssen, Jr.  
Dr. Carol Eaton Soltis  
Harold A. Sorgenti  
Karl Henry Spaeth  
Boyd Lee Spahr, III  
Bernard Spain  
Wayne S. Spilove  
Georgianna Hannum Stapleton  
Alan Lowe Stedman

R. Philip Steinberg  
Randall F. Stellwag  
Constantine Stephano  
Kathleen A. Stephenson  
Lester G. Steppacher, M.D.  
Charles Albert Sterling  
George Scott Stewart, III  
Thomas Somerville Stewart  
Mrs. Richard W. Stokes  
Rebecca T. Stoloff  
James Bennett Straw, AIA  
Charles S. Strickler, Jr.  
Mrs. Morris W. Stroud, II  
Patricia Tyson Stroud  
Samuel S. Stroud, Sr.  
Dr. Marie Stuart  
Adrienne Snelling Sullivan  
Derik F. Sutphin  
Jonathan S. Sutton, AIA  
David M. Szewczyk  
Albert M. Tanner  
Dr. Sandra Tatman  
Professor George B. Tatum  
Mrs. Howard W. Taylor, Jr. \*  
Mark-Allen Taylor  
Robert M. W. Taylor  
Temple University Press  
Mrs. John J. Terry  
Mrs. Harrison Therman  
Alexis Ollier Thielens  
Richard W. Thom, AIA  
Donna Robertson Thomas  
Dr. George E. Thomas  
Robert P. Thomas, AIA  
Mrs. Radclyffe F. Thompson  
Mrs. Joseph W. Tiberio  
Brian P. Tierney, Esq.  
Robert Tiffany, III  
Philip C. Timon  
Louisa Rawle Tine  
John Todd, AIA  
Karen Tourian  
P. Coleman Townsend, Jr.  
Mrs. David S. Traub  
Howard A. Trauger  
Peter J. Travers  
The Reverend James A. Trimble  
Pamela D. Trimmingham  
Joan Rollins Tropp  
Peter J. Tucci, Esq.  
John J. Turchi, Jr.  
Dr. Evan H. Turner  
John C. Tuten, Jr.  
Mark Ueland, AIA  
The Reverend Richard L. Ullman  
R. Thomas Unkefer, Jr.  
Michael J. Valente  
James L. Van Alen, Jr.

## Donors

Mrs. Gerrit P. Van de Bovenkamp  
Charles F. Van Doren  
Nadeen R. Van Tuyle  
Stephen Varenhorst, AIA  
Mary James Vaux  
Caroline P. Veit  
Robert Venturi, FAIA  
Douglas V. Verney  
Sandra Barenbaum Vernick  
Nancy J. Vickers  
Michael E. Volpe  
Peggy & Ellis Wachs Foundation  
Laurie Wagman  
Thomas J. Wagner, Esq.  
Douglas C. Walker  
Richard M. Walker  
Walnut Street Theatre  
Marshall J. Walthew  
Geoffrey L.B. Walton  
Carol J. Ward  
James Bryce Warden  
Michael J. Warhol, M.D.  
Penelope S. Watson, AIA  
Mrs. Thomas S. Weary  
Christina T. Webber  
Mary Ellen Weber  
Jeffrey G. Weil  
Carole M. Weiner  
Arleen C. Weinstein  
Fred Weinstein  
Joan K. Wells  
Frank S. Welsh  
Dr. Alice D. White  
George P. White  
Wichita Public Library  
Barry F. Wiksten  
Barry S. Wildstein  
William Penn Foundation  
Joanne B. Williams  
Thomas P. Williams  
William Earle Williams  
C. Richard Wilson  
Gail Caskey Winkler  
Howard E. Winklevoss  
Joseph A. Witkowski, M.D.  
Lisa M. Witomski  
Edith Stead Wittman  
Charles J. Wolf, M.D.  
Jean K. Wolf  
Mrs. Charles R. Wood  
Roland H. Woodward  
Richard B. Worley  
Mrs. Minturn T. Wright, III \*  
Jeanne P. Wroblewski, Esq.  
Aaron Wunsch

Nicholas K. Wyman  
Yale University Press  
James B. Yarnall  
David Young  
Eli P. Zebooker, D.D.S.  
John Zukowsky  
Lorraine J. Zwolak, Esq.

\* Deceased



